

MATTIRA MBX

Smart Electric Modulating Boiler

INSTANTANEOUS HEATING AND DHW

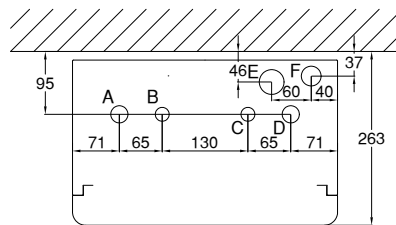
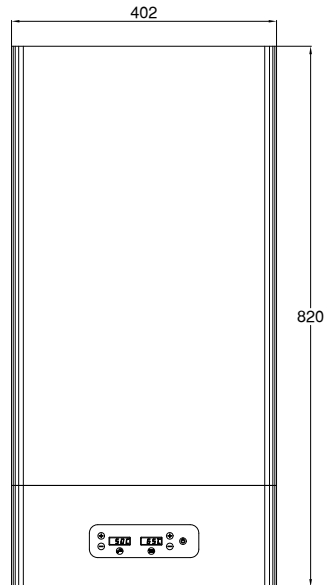
Technical Specifications

- Mattira MBX wall mounted model.
- Heat-insulated steel heating cylinder.
- Smart Electronic Modulating system (SEM).
- AUTO-Regulation mode.
- Stainless steel shielded elements - INCOLOY 800.
- 6 L. expansion vessel.
- Electronic modulating heating output control.
- Electronic regulation for DHW.
- Digital display.
- Hydrometer 0-4 bar.
- Circulation pump.
- Automatic air valve.
- Silent power switches (TRIACS).
- Heating temperature limiter 100°C.
- Heating pressure switch.
- Heating 3 bar relief valve.
- Connection for room thermostat or room chronothermostat, required for modulating.
- Steel structure finished in epoxy RAL 9010.
- Lockable keyboard.
- Steel wall fixing template for easy and correct positioning.
- Suitable for use with underfloor heating installations.
- Compatible with room thermostat TA4D and chronothermostats CTM WIFI, CTP10 and X2D offered as accessories.
- The outdoor sensor is required to activate the "Auto Heating Regulation" mode. It is offered as an accessory.



Mattira MBX15 wall mounted





Dimensions and connections:

- A - Heating flow 3/4"
- B - DHW outlet 1/2"
- C - Cold water inlet 1/2"
- D - Heating return 3/4"
- E - Electrical connection
- F - Drain safety valve

MODELS		MBX15											
Selectable output	kW	3	4	5	6	7	8	9	10	11	12	13	15
kcal/h	kcal/h	2580	3440	4300	5160	6020	6880	7740	8600	9460	10320	11180	12900
3x400 V+N~	A	13,0	13,0	13,0	13,0	13,0	13,0	13,0	21,7	21,7	21,7	21,7	21,7
*230 V~	A	13,0	17,4	21,7	26,1	30,4	34,8	39,1	43,5	47,8	52,2	ASK	ASK

* Using the connection bridge included in the boiler up to 12 kW.



MODELS	MBX15	
Voltage	3x400 V+N~ / 230 V~	
Insulation	Class I	
Maximum DHW flow	l/min	8,6
Net Weight	kg	32

* Maximum DHW flow rate for boiler set at 15kW with 25°C difference between inlet and outlet.

Suitable for use with underfloor heating, please consult us.

ACCESSORIES FOR MATTIRA BMX BOILERS

TA4D



CTM WIFI



X2D



E-X2D



R-X2D

CTP10



OUTDOOR SENSOR

